



SHEET INDEX	
SHEET NUMBER	DRAWING TITLE
C000	COVER SHEET, SHEET INDEX & LOCATION MAP
C001	GENERAL NOTES & OVERALL LAYOUT PLAN
C002	LAYOUT PLAN (SHEET 1 OF 4)
C003	LAYOUT PLAN (SHEET 2 OF 4)
C004	LAYOUT PLAN (SHEET 3 OF 4)
C005	LAYOUT PLAN (SHEET 4 OF 4)
C006	TYPICAL DETAILS (SHEET 1 OF 2)
C007	TYPICAL DETAILS (SHEET 2 OF 2)

# ROTORUA LAKES COUNCIL

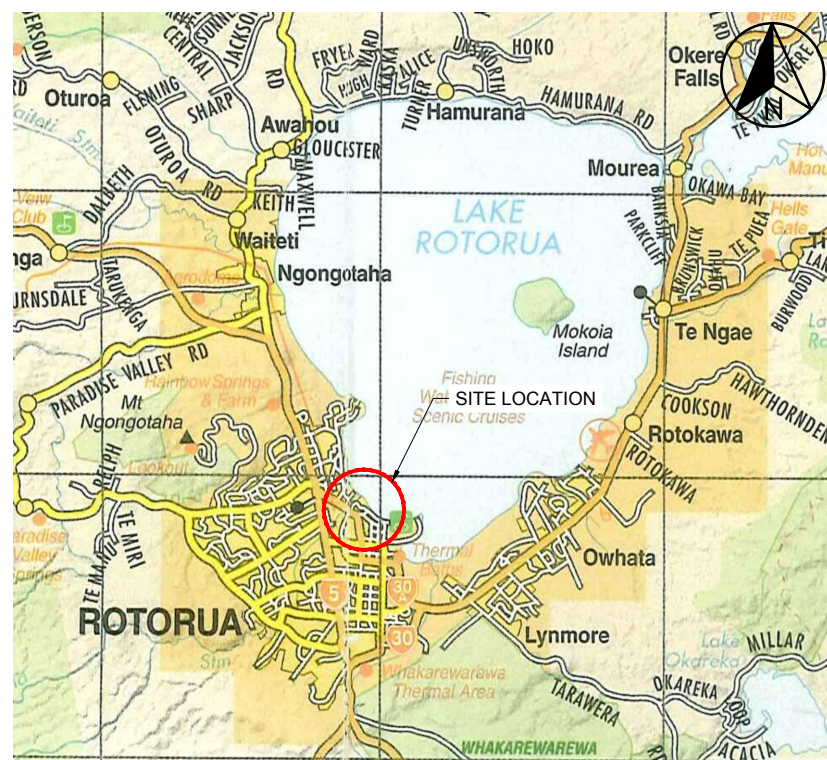
## LAKE ROAD - RANOLF STREET TO LAKE FRONT

## CYWAY - INNER CITY LINK

### CONSTRUCTION

Project No: 289476.00 (CY607)

Date: 02/12/2016



LOCATION MAP  
NOT TO SCALE



300 mm  
200  
100  
50  
10 mm  
0

GENERAL NOTES:

1. ALL WORKS SHALL COMPLY WITH ROTORUA CIVIL ENGINEERING INDUSTRY STANDARD 2000, VERSION 2004 UNLESS STATED OTHERWISE.
2. THESE DRAWINGS SHALL BE READ IN CONJUNCTION WITH THE CONDITIONS OF CONTRACT AND ASSOCIATED SPECIFICATION WITH FINAL APPROVAL OF THE WORKS TO BE AGREED BY THE ENGINEER. SUBSTITUTION FOR AN AMMENDMENT OF SPECIFIED DETAILS OR MATERIALS SHALL NOT BE CARRIED OUT WITHOUT THE APPROVAL OF THE ENGINEER.
3. LEGAL SURVEY MARKS MAY EXIST WITHIN THE CONSTRUCTION AREA. IT IS THE CONTRACTORS RESPONSIBILITY TO LIAISE WITH LINZ TO DETERMINE WHICH, IF ANY MARKS REQUIRE RELOCATION AND ARRANGE FOR THEIR RELOCATION.
4. BOUNDARIES HAVE BEEN OBTAINED FROM QUICKMAP BEING LINZ 8th ORDER HAVING A 95% CONFIDENCE OF ACCURACY TO +/- 0.5m.
5. THE LOCATION OF EXISTING SERVICES SHOWN ARE INDICATIVE ONLY AND OTHER UNDERGROUND SERVICES NOT SHOWN MAY EXIST WITHIN THE CONSTRUCTION AREA. IT IS THE CONTRACTORS RESPONSIBILITY TO OBTAIN CURRENT AND ACCURATE LOCATION PLANS FROM THE RELEVANT SERVICE AUTHORITIES AND CONFIRM THE EXACT LOCATION ON SITE PRIOR TO COMMENCEMENT OF ANY WORKS.
6. ANY ROTORUA DISTRICT COUNCIL UTILITY SERVICES SHOWN HAVE BEEN PROVIDED FROM THE CURRENT GIS DATABASE.
7. ACCESS TO PROPERTIES WITHIN THE CONSTRUCTION AREA SHALL BE MAINTAINED AT ALL TIMES.
8. ALL ENTRANCEWAYS, GRASS BERMS, GARDENS ETC ARE TO BE REINSTATED TO THERE ORIGINAL CONDITION OR BETTER ON COMPLETION OF THE WORKS (REFER SPECIFICATIONS).
9. WHERE THE EXISTING ASPHALT FOOTPATH IS TO BE REMOVED, THE EXISTING COBBLESTONE EDGING SHALL BE CAREFULLY REMOVED AND STORED FOR REUSE WHEN CONSTRUCTING THE NEW ASPHALT SHARED PATH.



LEGEND

	EXISTING	PROPOSED
CONSTRUCT NEW 2.50m SHARED PATH		
WIDEN EXISTING CONCRETE FOOTPATH		
EXISTING FOOTPATH TO REMAIN		
LEGAL BOUNDARY		
EXISTING CRIB WALL		
CATCHPIT		
STORMWATER		
STORM WATER MANHOLE		
SIGN		
LOW TIMBER RETAINING WALL		
GAS SERVICES		

CONSTRUCTION

1:2000 @ A1  
1:4000 @ A3  
0 20 40 60 80 100 120 140 160 180 200 m

Original Sheet Size A1 [841x594] Plot Date 2016-12-02 at 4:09:55 p.m. Path G:\CLIENTS\Rotorua Lakes Council\2-89476.00 RDC 14\_023 Local RNM\5.0 Capital Projects\CY607 - Inner City Link\_Ranolf St to Lake Front\3 Design\Drawings\Civil\Civil\289476.00\_CY607\_DES - COUNCIL CHANGES.dwg C001(1)

Revision	Amendment	Approved	Revision Date

**ROTORUA  
LAKES COUNCIL**  
Te kaunihera o ngā roto o Rotorua

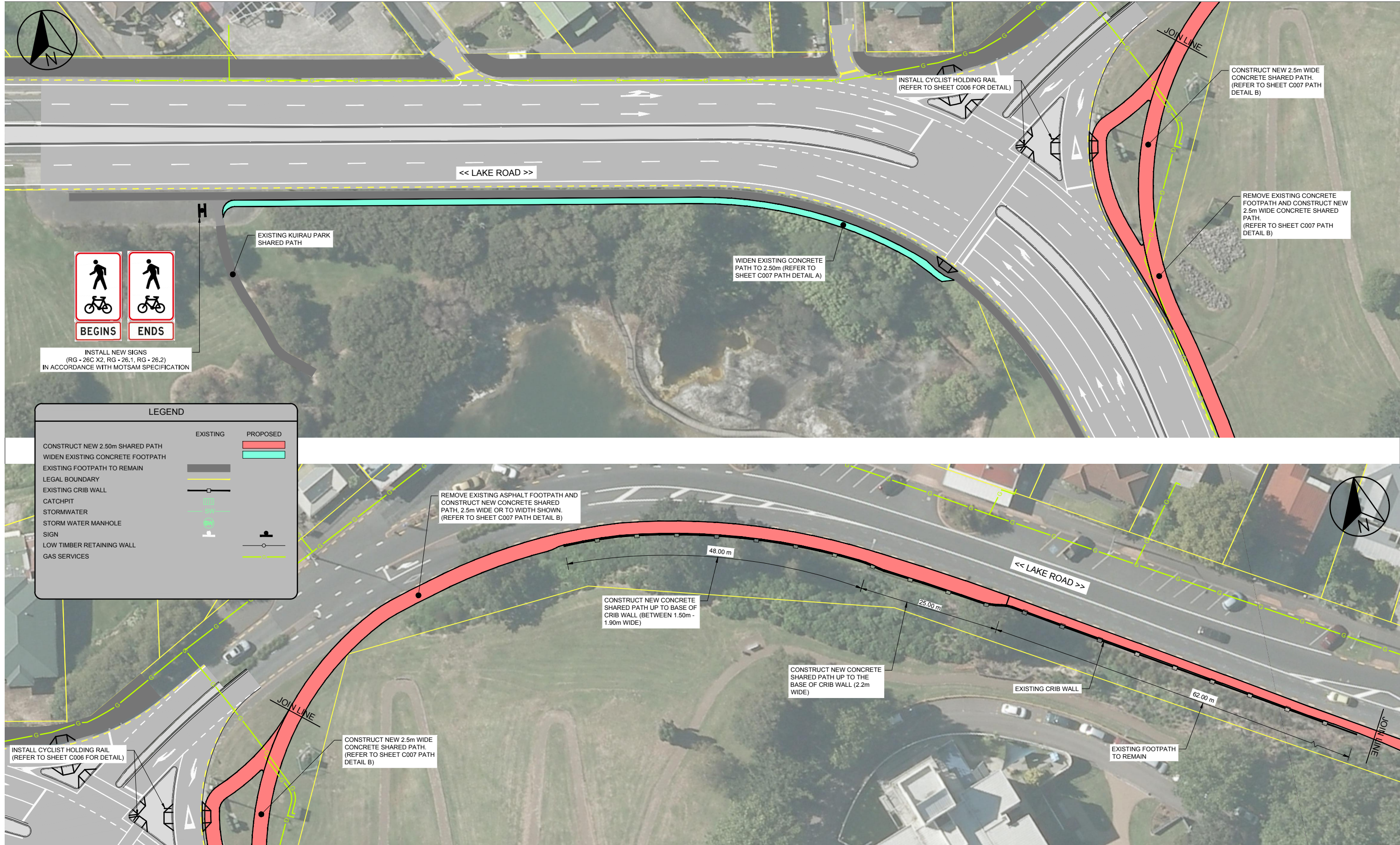
**OPUS**  
Rotorua Office  
+64 7 343 1400

PO Box 1245  
Rotorua 3040  
New Zealand

Designed	Approved	Approved Date
F S	F S	02/12/2016
Drawn	Scales	
P S	1:2000 (A1) 1:4000 (A3)	

Project		
ROTORUA LAKES COUNCIL LAKE ROAD - RANOLF STREET TO LAKE FRONT CYWAY - INNER CITY LINK		
Sheet		
GENERAL NOTES & OVERALL LAYOUT PLAN		
Project No.	Sheet No.	Revision
289476.00_CY607	C001	1





1:250 @ A1  
1:500 @ A3

0

4

8

12

16

20

24

m

Revision	Amendment	Approved	Revision Date

ROTORUA  
LAKES COUNCIL

Te kaunihera o ngā roto o Rotorua

OPUS

Rotorua Office  
+64 7 343 1400

PO Box 1245  
Rotorua 3040  
New Zealand

Project  
ROTORUA LAKES COUNCIL  
LAKE ROAD - RANOLF STREET TO LAKE FRONT  
CYWAY - INNER CITY LINK

Sheet  
LAYOUT PLAN  
(SHEET 1 OF 4)

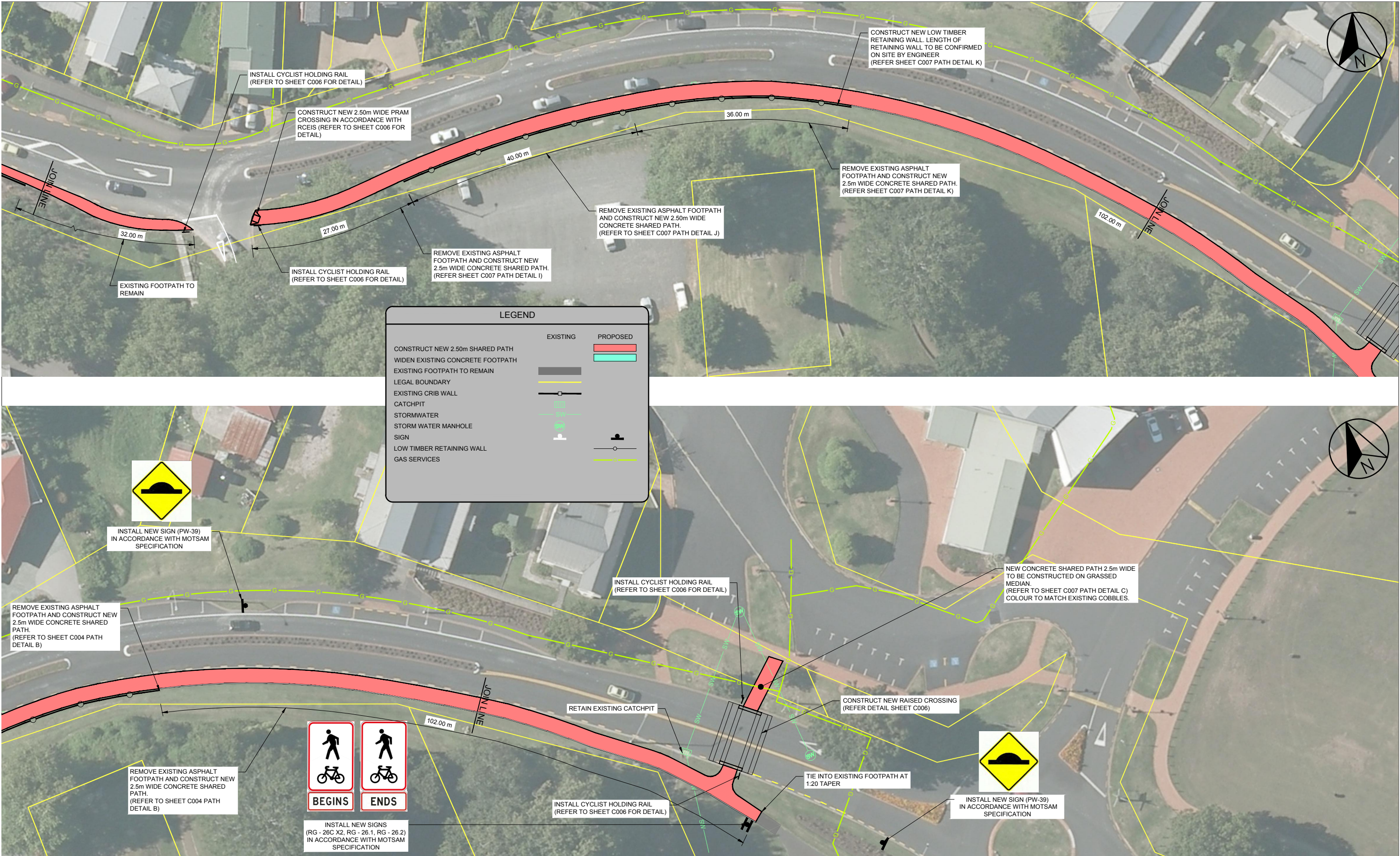
Project No.  
289476.00\_CY607

Sheet No.  
C002

Revision  
1

CONSTRUCTION





CONSTRUCTION

				<div><div></div><div>OPUS</div><div>Rotorua Office +64 7 343 1400</div></div> <div>PO Box 1245 Rotorua 3040 New Zealand</div>		<div>Project</div> <div>ROTORUA LAKES COUNCIL LAKE ROAD - RANOLF STREET TO LAKE FRONT CYWAY - INNER CITY LINK</div>	
						<div>Sheet</div>	
						<div>LAYOUT PLAN (SHEET 2 OF 4)</div>	
Designed		Approved		Approved Date			
F S				02/12/2016			
Drawn		Scales		Project No.		Sheet. No.	Revision
P S		1:300 (A1) 1:600 (A3)		289476.00_CY607		C003	1

1:1 @ A1

1:2 @ A3

0

10

20

30

40

50

60

70

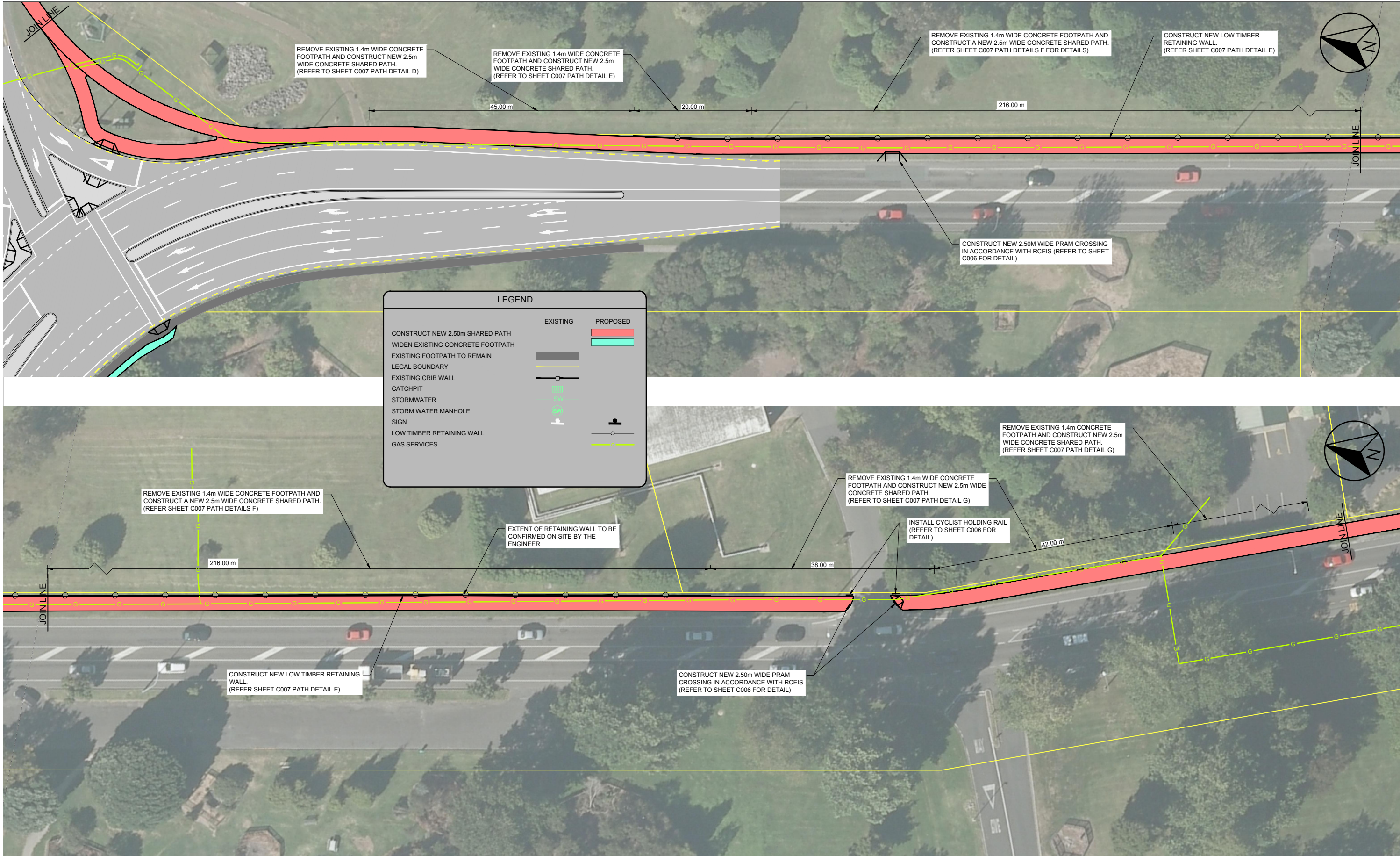
80

90

100

mm





CONSTRUCTION

Revision	Amendment	Approved	Revision Date

ROTORUA  
LAKES COUNCIL

Te kaunihera o ngā roto o Rotorua

OPUS

Rotorua Office  
+64 7 343 1400

PO Box 1245  
Rotorua 3040  
New Zealand

Designed  
F S

Approved  
F S

Approved Date  
02/12/2016

Drawn  
P S

Scales  
1:300 (A1) 1:600 (A3)

Project  
ROTORUA LAKES COUNCIL  
LAKE ROAD - RANOLF STREET TO LAKE FRONT  
CYWAY - INNER CITY LINK

Sheet  
LAYOUT PLAN  
(SHEET 3 OF 4)

Project No.  
289476.00\_CY607

Sheet No.  
C004

Revision  
1

1:1 @ A1  
1:2 @ A3

0

10

20

30

40

50

60

70

80

90

100

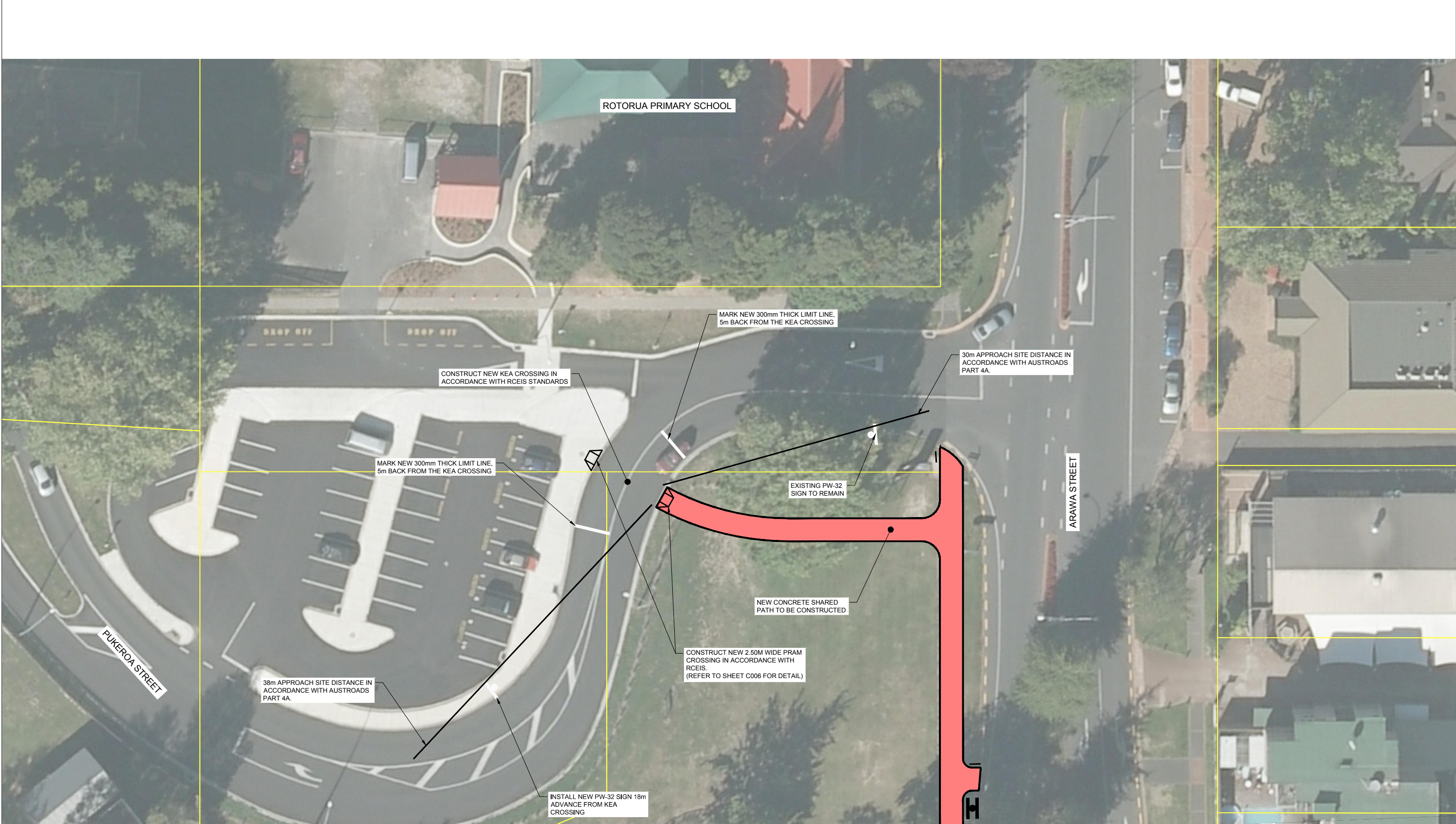
mm

Original Sheet Size A1 [841x594]

Plot Date 2016-12-02 at 4:15:06 p.m.

Path G:\CLIENTS\Rotorua Lakes Council\2-89476.00 RDC 14\_023 Local RNM\5.0 Capital Projects\CY607 - Inner City Link\_Ranolf St to Lake Front\3 Design\Drawings\Civil\Civil3D\289476.00\_CY607\_DES - COUNCIL CHANGES.dwg C004(1)





1:200 @ A1  
1:400 @ A3  
0 2 4 6 8 10 12 14 16 18 20 m

Revision	Amendment	Approved	Revision Date

**ROTORUA  
LAKES COUNCIL**  
Te kaunihera o ngā roto o Rotorua

**OPUS**  
Rotorua Office  
+64 7 343 1400

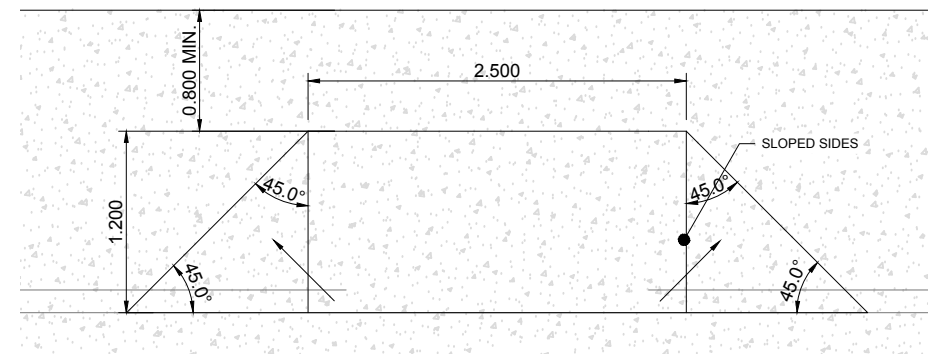
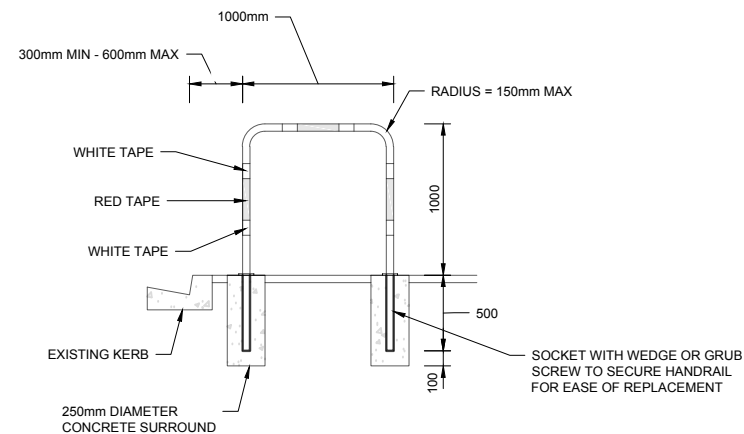
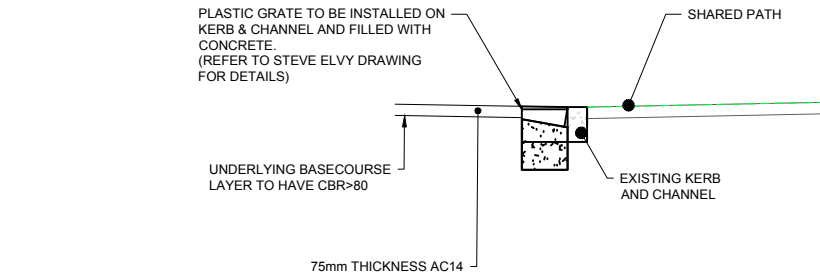
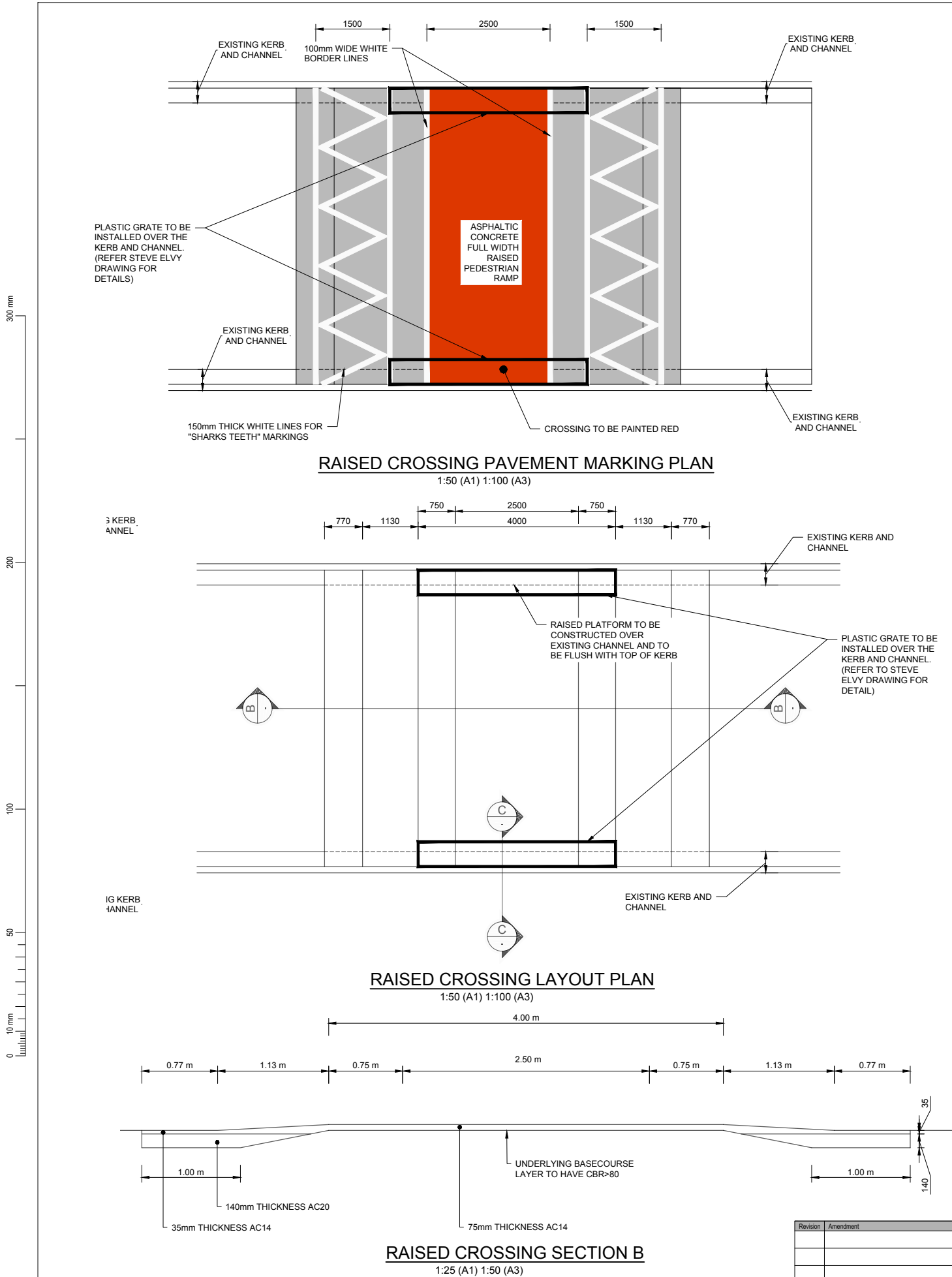
PO Box 1245  
Rotorua 3040  
New Zealand

Designed	Approved	Approved Date
P S	F S	08/12/2016
Drawn	Scales	
P S	1:300 (A1) 1:600 (A3)	

Project		
ROTORUA LAKES COUNCIL LAKE ROAD - RANOLF STREET TO LAKE FRONT CYWAY - INNER CITY LINK		
Sheet		
LAYOUT PLAN OF KEA CROSSING FOR ROTORUA PRIMARY SCHOOL		
Project No.	Sheet No.	Revision
289476.00_CY607	C010	A

PRELIMINARY





Revision	Amendment	Approved	Revision Date

**ROTORUA LAKES COUNCIL**  
Te kaunihera o ngā roto o Rotorua

**OPUS**  
Rotorua Office  
+64 7 343 1400

PO Box 1245  
Rotorua 3040  
New Zealand

Designed	Approved	Approved Date
P.S.	F.S.	02/12/2016
Drawn	Scales	
P.S.	AS SHOWN	

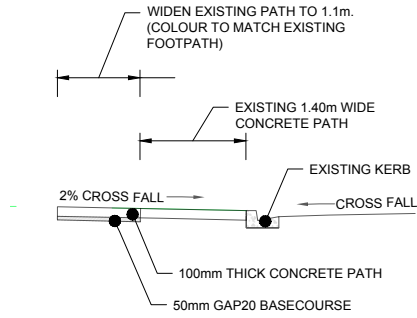
Project  
ROTORUA LAKES COUNCIL  
LAKE ROAD - RANOLF STREET TO LAKE FRONT  
CYWAY - INNER CITY LINK

Sheet  
**TYPICAL DETAILS (SHEET 1 OF 2)**

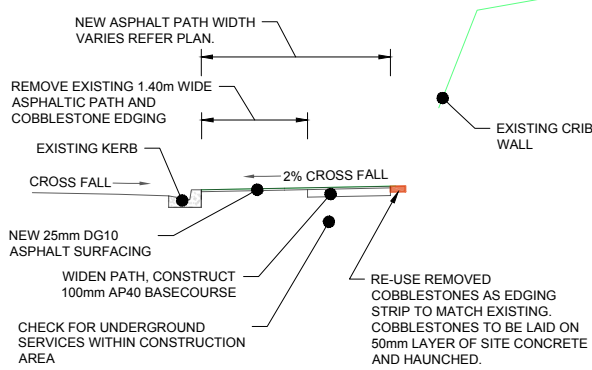
Project No.	Sheet No.	Revision
289476.00_CY607	C006	1



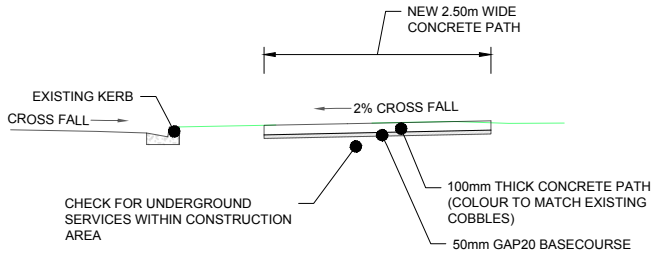
300 mm  
200  
100  
50  
10 mm  
0



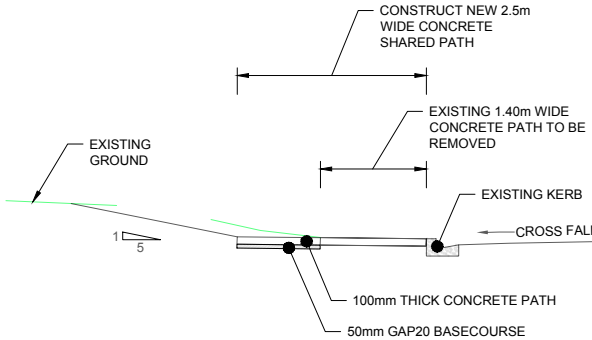
**PATH DETAIL A**  
1:50 (A1) 1:100 (A3)



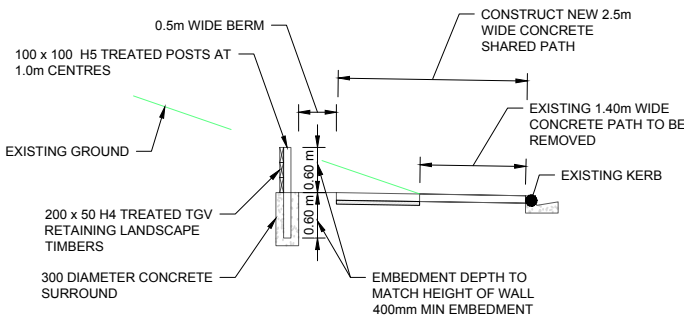
**PATH DETAIL B**  
1:50 (A1) 1:100 (A3)



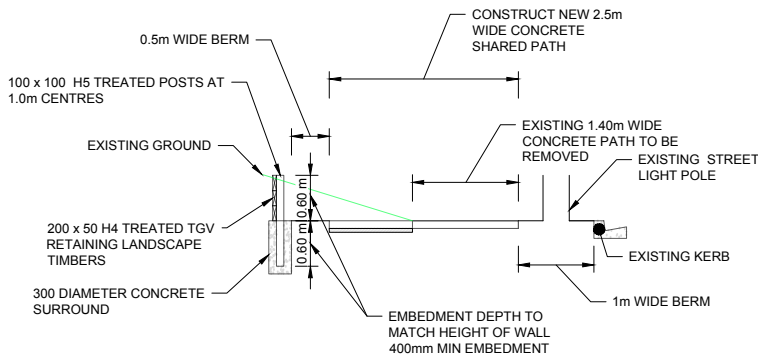
**PATH DETAIL C**  
1:50 (A1) 1:100 (A3)



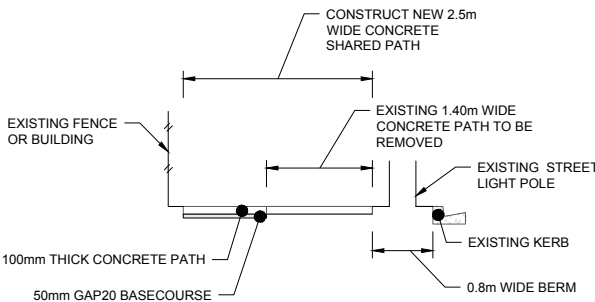
**PATH DETAIL D**  
1:50 (A1) 1:100 (A3)



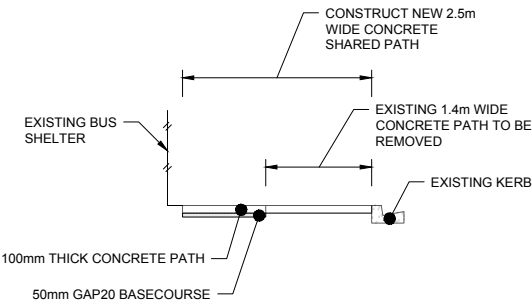
**PATH DETAIL E**  
1:50 (A1) 1:100 (A3)



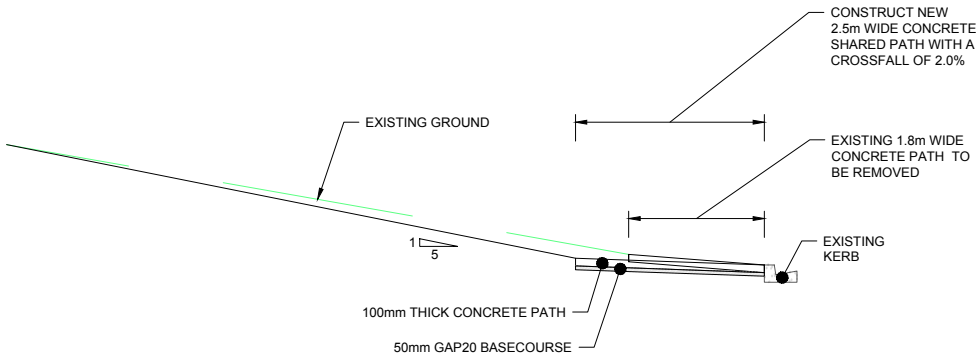
**PATH DETAIL F**  
1:50 (A1) 1:100 (A3)



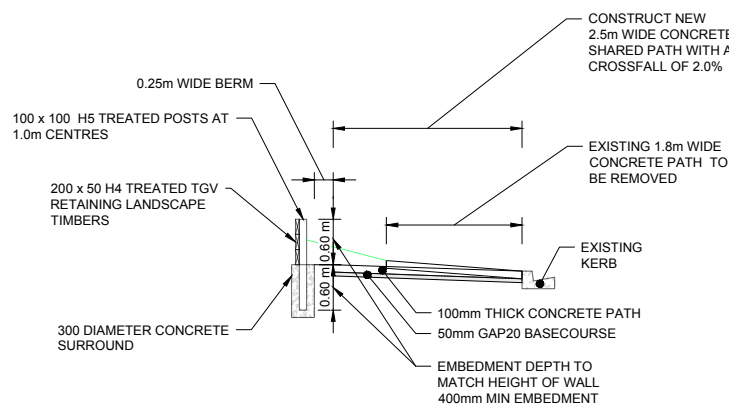
**PATH DETAIL G**  
1:50 (A1) 1:100 (A3)



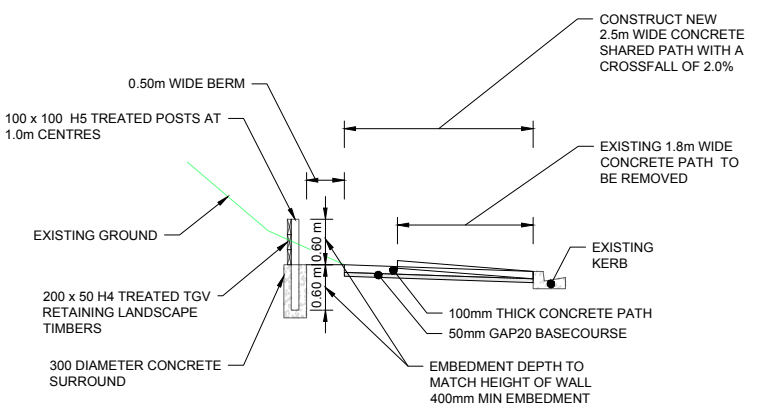
**PATH DETAIL H**  
1:50 (A1) 1:100 (A3)



**PATH DETAIL I**  
1:50 (A1) 1:100 (A3)



**PATH DETAIL J**  
1:50 (A1) 1:100 (A3)



**PATH DETAIL K**  
1:50 (A1) 1:100 (A3)

1:50 @ A1  
1:100 @ A3  
0 1 2 3 4 5 m

Revision	Amendment	Approved	Revision Date

**ROTORUA LAKES COUNCIL**  
Te kaunihera o ngā roto o Rotorua

**OPUS**  
Rotorua Office  
+64 7 343 1400

Designed	Approved	Approved Date
P.S	F.S	02/12/2016
Drawn	Scales	
P.S	AS SHOWN	

Project		
ROTORUA LAKES COUNCIL LAKE ROAD - RANOLF STREET TO LAKE FRONT CYWAY - INNER CITY LINK		
Sheet		
TYPICAL DETAILS (SHEET 2 OF 2)		
Project No.	Sheet No.	Revision
289476.00_CY607	C007	1